



CDSL *Infoline*



CDSL is ISO 27001 certified

WHAT'S INSIDE?

CDSL Today	2
What's New ?	3 - 5
Investment by Qualified Foreign Investors (QFI) in Indian Capital Market	
e-Voting – Receipt of STQC Certificate	
Upload & Download of KYC Data	
CVL - KRA – User Management and Courier Procedure	
Entry of Date of Birth [DOB] Mandatory In the CDSL System	
New Market Type for Segment "Offer for Sale" — BSE	
Verification of Documents with Originals	
Discontinuation of DP21, DP24 & DP27 Reports	
Insurance Policy for Warehouse Receipts held In Dematerialised Form	
Investor Awareness Programs (IAPs)	
New DPs Admitted In CDSL	
Change in name of Companies during January - February 2012	
Equities Admitted During January - February 2012	5 - 6

Register for CDSL's internet facilities
easi/easiest for an any time - anywhere
access to your demat account.



Electronic Access
to Securities Information



Electronic Access to Securities Information
and execution of Secured Transactions

Register for SMART and
obtain SMS alerts for
debit/credit transactions.



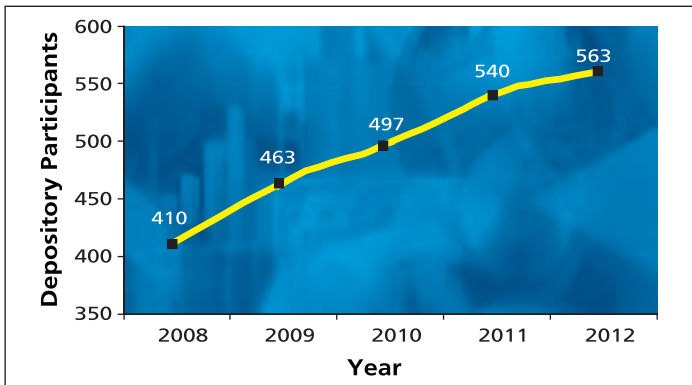
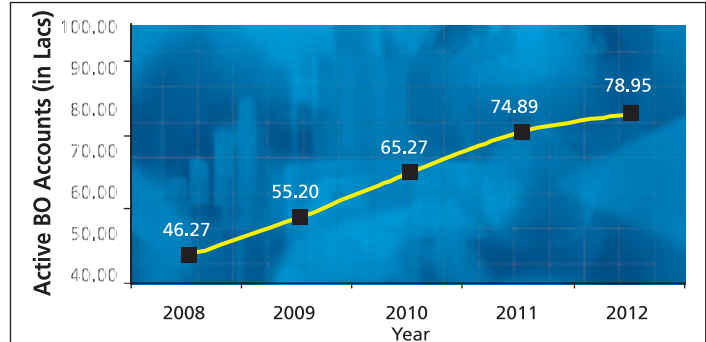
Sms Alerts Related
to Transactions

To know more, visit CDSL's website www.cdslindia.com or contact your DP.

CDSL TODAY

Beneficial Owners

During the last 12 months, the number of active BO accounts with CDSL has increased from 74.89 lakh as on February 28, 2011 to 78.95 lakh as on February 29, 2012, which indicates growth of 5.42%.

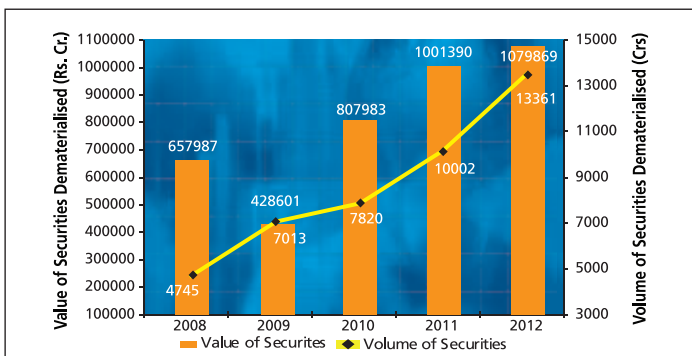
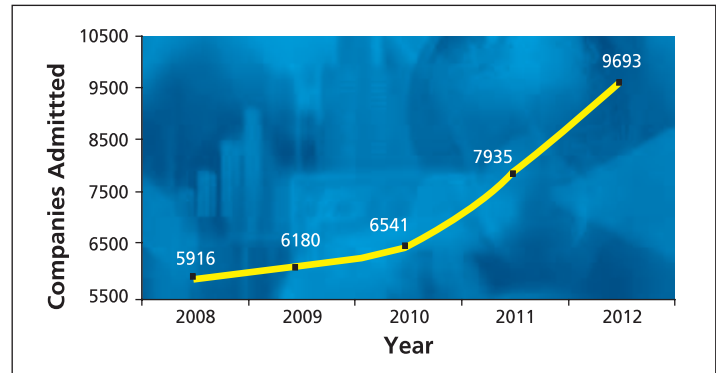


Depository Participants

As on February 29, 2012, CDSL has 563 DPs offering DP services from over 10600 locations across the country. These DPs comprise of CMs, Banks, NBFCs, Custodians, Clearing Houses/Corporations and Regional Stock Exchanges.

Companies Admitted

The securities of almost all listed companies have been admitted with CDSL for demat. Further, a large number of Private Limited and unlisted companies are also admitted with CDSL. As on February 29, 2012, the securities of 9693 companies have been admitted for demat with CDSL.



Securities Dematerialised

During the last 12 months, the volume of securities under custody has increased by 33.58% and the value of securities has increased by 7.83% respectively.

WHAT'S NEW ?

INVESTMENT BY QUALIFIED FOREIGN INVESTORS (QFI) IN INDIAN CAPITAL MARKET

In order to facilitate the Central Government's decision to allow QFIs to directly invest in Indian equity market, SEBI has issued a circular ref CIR/IMD/FII&C/3/2012 on January 13, 2012. Earlier, SEBI had issued circular ref CIR/IMD/DF/14/2011, dated August 9, 2011 which allowed foreign investors to invest in equity and debt schemes of Mutual Funds (MF). DPs who wish to become a 'Qualified DP' and open demat accounts of 'Qualified Foreign Investors' (QFIs) should refer to CDSL Communiqué No. 2788 or visit our website www.cdslindia.com for the procedure to be completed.

e-VOTING – RECEIPT OF STQC CERTIFICATE

The Ministry of Corporate Affairs, vide its Circular No. 21/2011 dated May 2, 2011 had approved CDSL to act as a system provider for recording electronic votes subject to CDSL obtaining a Website Quality Certificate from the Standardisation, Testing and Quality Certification (STQC) Directorate, Department of Information Technology, Ministry of Communications & IT, Government of India. CDSL is pleased to announce that it has received the aforementioned Website Quality Certificate from the STQC Directorate. The e-Voting facility allows shareholders to cast their votes electronically for postal ballots, AGMs, EGMs etc. Companies interested in registering for e-Voting may visit www.evotingindia.com for registration details. For any enquiry related to e-Voting, kindly contact: Anand Tirodkar - (022) 2272-8153 or Prajakta Ghugal - (022) 2272-8634.

UPLOAD & DOWNLOAD OF KYC DATA

CDSL Ventures Limited (CVL) had communicated the availability of upload and download facility of KYC details through its communiqué number CVL/OPS/INTERM/GENRL/12-004, dated January 27, 2012.

CVL has now started providing for the download of KYC data in Excel [.xls] format for intermediaries. The downloaded data can be viewed in Microsoft Office Excel 2007. Intermediaries using Microsoft Office Excel 2003 should download Microsoft Office Compatibility Pack available under Download Center on the Microsoft website

in order to view the downloaded data. Download of KYC data is also available in XML format.

CVL has also made available the details of errors for files uploaded on the CVL-KRA Website under the 'KYC Bulk Upload' menu. For more information on this report, please refer to CVL's communiqué number CVL/OPS/INTERM/GENRL/12-008.

CVL - KRA – USER MANAGEMENT AND COURIER PROCEDURE

The KYC details of all clients intending to open an account with an intermediary registered with CVL-KRA have to be mandatorily updated on www.cvlkra.com. Each intermediary has been given rights through its Admin log-in to create or disable users. CVL has received many queries regarding creation of users, reset of password and non-receipt of login details etc. In order to address these queries, CVL has issued communiqué no.CVL / OPS / INTERM / GENRL / 12-006. Further, the physical documents received by intermediaries have to be forwarded to CVL-KRA, within 10 working days from entry into the system. The procedure for courier delivery has been provided in the CVL communiqué no.CVL / OPS / INTERM / GENRL / 12-005.

ENTRY OF DATE OF BIRTH [DOB] MANDATORY IN THE CDSL SYSTEM

CDSL, vide its communiqué no. CDSL/OPS/DP/ACCTS/2766 has made it mandatory for DPs to enter the Date of Birth (DOB) / Date of Incorporation (DOI) for the Sole or First Holder of the Demat account in the CDSL system with effect from February 04, 2012. DOB should be mandatorily entered for all accounts opened through online as well as through the upload mode.

In case of unregistered trust, PAN card of the trustees as well as the trust is collected and the PAN number of the trust is entered against all the trustees in the CDSL system. However, DPs should enter the DOB of the trustee against the first holder (trustee) in the CDSL system. Similarly, in case of partnership firm, the DOB of the partner should be entered for the first holder and not the DOI of the partnership firm.

NEW MARKET TYPE FOR SEGMENT “OFFER FOR SALE” – BSE

SEBI, vide its circular number CIR/MRD/DP/05/2012, allowed the offer for sale of shares by promoters of listed companies through a separate window provided by stock exchange(s). With a view to facilitate promoters of listed companies to offload their shares in a transparent manner, CDSL has added market type - 13 in the CDSL system towards the settlement of transactions for market type - offer for sale. DPs should incorporate the abovementioned change in their DP back office software.

VERIFICATION OF DOCUMENTS WITH ORIGINALS

SEBI vide its circular no. MIRSD/SE/Cir-21/2011, dated October 5, 2011, regarding KRA regulations has instructed that copies of all the documents submitted by the applicant to the intermediary should be self-attested and accompanied by originals for verification. Further, SEBI, through its circular no. MIRSD/CIR-26, dated December 23, 2011, listed out the persons who can carry out the In-Person Verification (IPV) on behalf of Intermediaries. DPs should note that the persons listed to carry out IPV may also carry out verification of documents with the original.

DISCONTINUATION OF DP21, DP24 & DP27 REPORTS

CDSL, vide its communique No. 2440 dated May 10, 2011 had informed DPs to mandatorily start using Single Download Report [DP57] with effect from June 01, 2011 as it would replace various reports provided in the CDSL system. The following reports have therefore been discontinued.

SR. NO.	REPORT ID	DESCRIPTION
1.	DP21	Dematerialization Request Report
2.	DP24	Dematerialization Summary
3.	DP27	Rematerialization Summary

INSURANCE POLICY FOR WAREHOUSE RECEIPTS HELD IN DEMATERIALIZED FORM

In order to cover the risks associated with warehouse receipts held by investors in dematerialized form,

CDSL has renewed its insurance policy which will cover CDSL & its Depository Participants (DPs) empanelled with various commodity exchanges for a period from January 01, 2012 to December 31, 2012. For details of the insurance policy, DPs are advised to refer to communiqué no 2791.

INVESTOR AWARENESS PROGRAMS (IAPs)

During January – February 2012, CDSL BOPF Trust has conducted 20 IAPs across India in association with BSE Investor Protection Fund and leading dailies such as Loksatta, Lokmat, Sakaal & Dainik Bhaskar. Leading CDSL DPs such as Reliance Securities Limited, India Infoline Limited, SBICAP Securities Limited, Bank of Maharashtra, Suresh Rathi Securities Private Limited, Shriam Financial Private Limited, Bonanza Portfolio Limited also participated in making these IAPs a grand success. CDSL jointly with BSE Limited and SEBI also arranged some programs along with organisations such as Institute of Chartered Accountants, Coimbatore District Consumer Protection Council and Consumer Guidance Society, Vijayawada.

For details on the forthcoming IAPs, kindly visit us at [http://www.cdslindia.com/Investor meets](http://www.cdslindia.com/Investor%20meets).



Shri U. K. Sinha, Chairman-SEBI sharing his thoughts at an IAP organized at Jaipur on 30th December, 2011 along with CDSL and BSE Limited.



Mr. Yashwant Gupta, Regional Manager - Jaipur, CDSL addressing investors at the IAP.



Mr. C S Thakur, Head-Investor Education, CDSL addressing audience at an IAP organized by BSE Limited, Abhyudaya Bank and Loksatta, a leading Marathi daily at Dadar on 28th February 2012. Over 600 investors attended this program.

NEW DPs ADMITTED IN CDSL

DPID	DP NAME	CITY
12073300	ISF SECURITIES LIMITED	NEW DELHI
12073400	DIVYA PORTFOLIO PRIVATE LIMITED	NEW DELHI

CHANGE IN NAME OF COMPANIES DURING JANUARY - FEBRUARY 2012

SRN	ISIN	OLD NAME	NEW NAME
1	INE760A01029	CAMLIN LIMITED	KOKUYO CAMLIN LIMITED
2	INE974C01022	CHANNEL GUIDE INDIA LIMITED	IRIS MEDIAWORKS LIMITED
3	INE008M01010	DHAVANIL CHEMICALS LIMITED	SHREY CHEMICALS LIMITED
4	INE295F01017	GANDHIMATHI APPLIANCES LIMITED	BUTTERFLY GANDHIMATHI APPLIANCES LIMITED
5	INE152C01017	GOLDEN SECURITIES LIMITED	GOLDEN GOENKA FINCORP LIMITED
6	INE551B01012	HIFUNDA LIMITED	UDAY JEWELLERY INDUSTRIES LIMITED
7	INE689I01015	HV AXLES LIMITED	TML DRIVELINES LIMITED
8	INE866I01019	INDIA INFOLINE INVESTMENT SERVICES LIMITED	INDIA INFOLINE FINANCE LIMITED
9	INE786B01022	INFOQUEST SOFTWARE EXPORTS LIMITED	CITY HOSPITALITIES INDIA LIMITED
10	INE354B01029	IT PEOPLE (INDIA) LIMITED	COMMEX TECHNOLOGY LIMITED
11	INE100L01017	KOSHA CUBIDOR CONTAINERS LIMITED	KCCL PLASTIC LIMITED
12	INE899M01012	LORDVEN TECHNOLOGIES LIMITED	APTUS INDUSTRIES LIMITED
13	INE7412F01042	MUNDRA PORT AND SPECIAL ECONOMIC ZONE LIMITED	ADANI PORTS AND SPECIAL ECONOMIC ZONE LIMITED
14	INE510H01015	NATRAJ FINANCIAL AND SERVICES LIMITED	ROYAL INDIA CORPORATION LIMITED
15	INE450K01018	RELIANCE CEMENTATION PRIVATE LIMITED	RELIANCE CEMENT COMPANY PRIVATE LIMITED
16	INE098M01011	SUNDARAM EDUSYS PRIVATE LIMITED	E-CLASS EDUCATION SYSTEM LIMITED
17	INE026L01022	TILAK FINANCE LIMITED	OUT OF CITY TRAVEL SOLUTIONS LIMITED
18	INE695C01015	TIRUMALA SEUNG HAN TEXTILES LIMITED	SOURCE INDUSTRIES (INDIA) LIMITED

EQUITIES ADMITTED DURING JANUARY - FEBRUARY 2012

SR. NO.	ISIN	ISIN NAME	RTA NAME
1	INE847M01011	AASHEE INFOTECH LIMITED	BEETAL FINANCIAL & COMPUTER SERVICES PRIVATE LIMITED
2	INE076N01015	ABHAY COTEX PRIVATE LIMITED	LINK INTIME INDIA PRIVATE LIMITED
3	INE013N01018	ACRUTI SAFEGUARD SYSTEMS PRIVATE LIMITED- CLASS A	LINK INTIME INDIA PRIVATE LIMITED
4	INE013N01026	ACRUTI SAFEGUARD SYSTEMS PRIVATE LIMITED- CLASS B	LINK INTIME INDIA PRIVATE LIMITED
5	INE134N01012	ALEX ENERGY PRIVATE LIMITED	LINK INTIME INDIA PRIVATE LIMITED
6	INE094N01018	ALEX MERCURY POWER PRIVATE LIMITED	LINK INTIME INDIA PRIVATE LIMITED
7	INE093N01010	ALEX SPECTRUM RADIATION PRIVATE LIMITED	LINK INTIME INDIA PRIVATE LIMITED
8	INE936M01012	AVIGHNA COMMERCE LIMITED	ABS CONSULTANTS PRIVATE LIMITED
9	INE052N01016	BALEWADI PROPERTIES PRIVATE LIMITED	SHAREPRO SERVICES (I) PRIVATE LIMITED
10	INE956M01010	BASUKINATH REAL ESTATE LIMITED	PURVA SHAREGISTRY INDIA PRIVATE LIMITED
11	INE955M01012	BAVISCON VINCOM LIMITED	PURVA SHAREGISTRY INDIA PRIVATE LIMITED
12	INE161N01015	BELAIRE HOTELS PRIVATE LIMITED	SHAREPRO SERVICES (I) PRIVATE LIMITED
13	INE958M01016	BHARTI TELEPORTS LIMITED	KARVY COMPUTERSHARE PRIVATE LIMITED
14	INE052I01024	CAMLIN FINE SCIENCES LIMITED	SHAREPRO SERVICES (I) PRIVATE LIMITED
15	INE800M01010	CAREFUL PROJECTS ADVISORY LIMITED	MAHESHWARI DATAMATICS PRIVATE LIMITED
16	INE092N01012	CARVAN CREATION PRIVATE LIMITED	LINK INTIME INDIA PRIVATE LIMITED
17	INE540E01019	CFM DEVELOPERS LIMITED	MAHESHWARI DATAMATICS PRIVATE LIMITED
18	INE037N01017	DBM GEOTECHNICS AND CONSTRUCTIONS PRIVATE LIMITED	ADROIT CORPORATE SERVICES PRIVATE LIMITED
19	INE931M01013	DICKSHA INFOSYSTEMS LIMITED	UNIVERSAL CAPITAL SECURITIES PRIVATE LIMITED
20	INE053N01014	DIGITAL ELECTRONICS LIMITED	SYSTEM SUPPORT SERVICES
21	INE196N01011	FAST TRAIN CARGO LIMITED	BIGSHARE SERVICES PRIVATE LIMITED
22	INE009N01016	FESTINO VINCOM LIMITED	MAHESHWARI DATAMATICS PRIVATE LIMITED

(Contd. on Page 6)

EQUITIES ADMITTED DURING JANUARY - FEBRUARY 2012 (Contd..)

SR. NO.	ISIN	ISIN NAME	RTA NAME
23	INE194N01016	FINE PLAST POLYMERS LIMITED	AARTHI CONSULTANTS PRIVATE LIMITED
24	INE141N01017	FIRST FINANCIAL SERVICES LIMITED	BIGSHARE SERVICES PRIVATE LIMITED
25	INE073N01012	FOUR SEASONS RESIDENCY LIMITED	LINK INTIME INDIA PRIVATE LIMITED
26	INE975M01010	GANDHAR MEDIA LIMITED	UNIVERSAL CAPITAL SECURITIES PRIVATE LIMITED
27	INE932M01011	GANESH HOLDINGS LIMITED	SYSTEM SUPPORT SERVICES
28	INE022N01019	GEE EL WOOLLENS LIMITED	BEETAL FINANCIAL & COMPUTER SERVICES PRIVATE LIMITED
29	IN9022N01017	GEE EL WOOLLENS LIMITED- PP	BEETAL FINANCIAL & COMPUTER SERVICES PRIVATE LIMITED
30	INE330B01011	GLOBAL LAND MASTERS CORPORATION LIMITED	SKYLINE FINANCIAL SERVICES PRIVATE LIMITED
31	INE927M01011	GRANDMA TRADING AND AGENCIES LIMITED	PURVA SHAREGISTRY INDIA PRIVATE LIMITED
32	INE160N01017	HEALTHY INVESTMENTS LIMITED	CIL SECURITIES LIMITED
33	INE120N01011	HIRA INFRA-TEK LIMITED	BIGSHARE SERVICES PRIVATE LIMITED
34	INE174N01018	ICVL CHEMICALS LIMITED	PURVA SHAREGISTRY INDIA PRIVATE LIMITED
35	INE175N01015	ICVL STEELS LIMITED	PURVA SHAREGISTRY INDIA PRIVATE LIMITED
36	INE038N01015	INTEGRATED THERMOPLASTICS LIMITED	XL SOFTECH SYSTEMS LIMITED
37	INE176N01013	INTELLIVATE CAPITAL ADVISORS LIMITED	PURVA SHAREGISTRY INDIA PRIVATE LIMITED
38	INE930M01015	ISHAN HOUSING PROJECTS LIMITED	NICHE TECHNOLOGIES PRIVATE LIMITED
39	INE131N01018	JOINTECA EDUCATION SOLUTIONS LIMITED	BEETAL FINANCIAL & COMPUTER SERVICES PRIVATE LIMITED
40	INE122N01017	JUMBO FINANCE LIMITED	SYSTEM SUPPORT SERVICES
41	INE081G01019	KANCHI KARPOORAM LIMITED	CAMEO CORPORATE SERVICES LIMITED
42	INE726F01011	KHARIKATIA TEA & INDUSTRIES LIMITED	NICHE TECHNOLOGIES PRIVATE LIMITED
43	INE050N01010	KINGS INFRA VENTURES LIMITED	S.K.D.C. CONSULTANTS LIMITED
44	INE781F01032	KURLON LIMITED	PURVA SHAREGISTRY INDIA PRIVATE LIMITED
45	INE490M01028	LAMBODAR NIRMIT LIMITED	PURVA SHAREGISTRY INDIA PRIVATE LIMITED
46	INE899M01012	LORDVEN TECHNOLOGIES LIMITED	AARTHI CONSULTANTS PRIVATE LIMITED
47	INE010N01014	MAIAM GLOBAL FOODS LIMITED	CAMEO CORPORATE SERVICES LIMITED
48	INE197N01019	MARVEL LANDMARKS PRIVATE LIMITED	UNIVERSAL CAPITAL SECURITIES PRIVATE LIMITED
49	INE170N01016	MIDEAST INTEGRATED STEELS LIMITED	SKYLINE FINANCIAL SERVICES PRIVATE LIMITED
50	INE804M01012	MONO HERBICIDES LIMITED	MAHESHWARI DATAMATICS PRIVATE LIMITED
51	INE095N01015	NATIONAL BUILDINGS CONSTRUCTION CORPORATION LIMITED	BIGSHARE SERVICES PRIVATE LIMITED
52	INE455M01021	NIKI METAL CO. LIMITED	PURVA SHAREGISTRY INDIA PRIVATE LIMITED
53	INE470M01020	NIMBUS INDUSTRIES LIMITED-RS.5/- AFTER SUBDIVISION	PURVA SHAREGISTRY INDIA PRIVATE LIMITED
54	INE091N01014	OLYMPIC MANAGEMENT & FINANCIAL SERVICES LIMITED	SHAREX DYNAMIC (INDIA) PRIVATE LIMITED
55	INE147N01014	P.C.S. SECURITIES LIMITED	CIL SECURITIES LIMITED
56	INE159N01019	PANJON FINANCE LIMITED	ANKIT CONSULTANCY PRIVATE LIMITED
57	INE977M01016	PHOENIX TOWNSHIP LIMITED	ADROIT CORPORATE SERVICES PRIVATE LIMITED
58	INE957M01018	PINNACLE VINTRADE LIMITED	PURVA SHAREGISTRY INDIA PRIVATE LIMITED
59	INE976M01018	PIONEER GAS POWER LIMITED	BIGSHARE SERVICES PRIVATE LIMITED
60	INE083C01022	PLASTIBLENDS INDIA LIMITED	SHAREX DYNAMIC (INDIA) PRIVATE LIMITED
61	INE054N01012	PRAKASH OILS LIMITED	ANKIT CONSULTANCY PRIVATE LIMITED
62	INE020N01013	PRELUDESYS INDIA LIMITED	CAMEO CORPORATE SERVICES LIMITED
63	INE309M01012	PREMIER POLYFILM LIMITED	BEETAL FINANCIAL & COMPUTER SERVICES PRIVATE LIMITED
64	INE195N01013	PROZONE CAPITAL SHOPPING CENTRES LIMITED	LINK INTIME INDIA PRIVATE LIMITED
65	INE978M01014	PUSHPAK HEALTHCARE SERVICES PRIVATE LIMITED- CLASS A	LINK INTIME INDIA PRIVATE LIMITED
66	INE978M01022	PUSHPAK HEALTHCARE SERVICES PRIVATE LIMITED- CLASS B	LINK INTIME INDIA PRIVATE LIMITED
67	INE986B01036	RADHE DEVELOPERS (INDIA) LIMITED	MCS LIMITED
68	INE040N01011	RUTRON INTERNATIONAL LIMITED	BIGSHARE SERVICES PRIVATE LIMITED
69	INE951M01011	S R K INDUSTRIES LIMITED	CAMEO CORPORATE SERVICES LIMITED
70	INE021N01011	SABOO BROTHERS LIMITED	SYSTEM SUPPORT SERVICES
71	INE980M01010	SAHARA ADVENTURE SPORTS LIMITED	LINK INTIME INDIA PRIVATE LIMITED
72	INE158N01011	SEI SOLAR ENERGY PRIVATE LIMITED	LINK INTIME INDIA PRIVATE LIMITED
73	INE051N01018	SHREE GANESH BIO-TECH (INDIA) LIMITED	NICHE TECHNOLOGIES PRIVATE LIMITED
74	INE538D01015	SHREE KARTHIK PAPERS LIMITED	S.K.D.C. CONSULTANTS LIMITED
75	INE079N01019	SHRI KALYAN HOLDINGS LIMITED	BEETAL FINANCIAL & COMPUTER SERVICES PRIVATE LIMITED
76	INE061K01013	SHRIRAM HOLDINGS (MADRAS) PVT LTD	INTEGRATED ENTERPRISES (INDIA) LIMITED
77	INE012N01010	SRI VINAYAKA PAPER AND BOARDS LIMITED	AARTHI CONSULTANTS PRIVATE LIMITED
78	INE225D01027	SYMPHONY LIMITED	SHAREPRO SERVICES (I) PRIVATE LIMITED
79	INE140N01019	SYNERGY PROPERTY DEVELOPMENT SERVICES PRIVATE LIMITED	LINK INTIME INDIA PRIVATE LIMITED
80	INE545L01013	TAK MACHINERY AND LEASING LIMITED	LINK INTIME INDIA PRIVATE LIMITED
81	INE133N01014	TANVI FINANCIAL SERVICES PRIVATE LIMITED	CIL SECURITIES LIMITED
82	INE121N01019	THEJO ENGINEERING LIMITED	CAMEO CORPORATE SERVICES LIMITED
83	INE024N01015	TRANSCEND COMMERCE LIMITED	PURVA SHAREGISTRY INDIA PRIVATE LIMITED
84	INE942M01010	TRISTAR RETAIL LIMITED	BIGSHARE SERVICES PRIVATE LIMITED
85	INE074N01010	TULSI CASTINGS AND MACHINING LIMITED	BIGSHARE SERVICES PRIVATE LIMITED
86	INE039N01013	UNIBIOS LABORATORIES LIMITED	LINK INTIME INDIA PRIVATE LIMITED
87	INE130N01010	UNIJOLLY INVESTMENTS COMPANY LIMITED	CIL SECURITIES LIMITED
88	INE142N01015	UNNO INDUSTRIES LIMITED	PURVA SHAREGISTRY INDIA PRIVATE LIMITED
89	INE077N01013	VARAHI LIMITED	BIGSHARE SERVICES PRIVATE LIMITED
90	INE072N01014	WELL- GROOMED DEVELOPERS LIMITED	LINK INTIME INDIA PRIVATE LIMITED
91	INE132N01016	ZENITH CAPITALS LIMITED	SYSTEM SUPPORT SERVICES



KNOW RISKY CUSTOMERS

YOUR CUSTOMER... IS OUR REASON OF BEING HERE!

- CDSL Ventures Limited [CVL], a wholly owned subsidiary of Central Depository Services (India) Limited [CDSL] is the **1st KYC Registration Agency [KRA] in India.**
- Over 1100 intermediaries have registered with CVL for KYC updation.
- Over 3.5 lakh investors have done their KYC through CVL since January 1, 2012.
- Competitive charges for upload/download of KYC, which includes courier charges.

HURRY... REGISTER WITH CVL-KRA TODAY!

For more information / clarifications, kindly contact:

Mr. Sanjeev Kate at (022) 61216905 / Email id: sanjeevk.cvl@cdslindia.com or

Mr. Santosh Patil at (022) 61216906 / Email id: santoshp.cvl@cdslindia.com



CDSL Ventures Limited

I-202, 2nd Floor (Deck Level), Tower No.4,
Above Belapur Railway Station, CBD Belapur, Navi Mumbai - 400 614

Tel: 022-61216908 / 09/ 10/ 11 / 12 / 25

visit us at www.cvlkra.com



www.cdslindia.com



www.cvlindia.com

CDSL Regional Offices

Western Region

Ahmedabad

Mr. Utpal Shah
203/204, Abhisree Avenue,
2nd floor, Near Nehru Nagar Circle,
S.M.Road, Ambawadi, Gujarat
Ahmedabad – 380 015
Phone : 079 - 30936232
Mobile No.: (0)9327691723
Email : utpals@cDSLindia.com

Northern Region

New Delhi

Mr. Prateek Mohan
16th Floor, Gopal Das Bhawan,
28, Barsakhamba Road,
New Delhi - 110001.
Phone : 011 - 43007413-18
Email : prateekm@cDSLindia.com

Jaipur

Mr. Yashwant Gupta
C/o Jaipur Stock Exchange,
Room No. 37B, 3rd Floor,
J.L.N. Marg, Malviya Nagar,
Jaipur - 302 017.
Mobile No.: (0)9314647826
Email : yashwantg@cDSLindia.com

Ludhiana

Mr. Inderjeet Singh Panchhi
214, Ludhiana Stock Exchange
Building, Feroze Gandhi Market,
Ludhiana – 141 001. Punjab
Mobile No.: (0)9672803304
Email: Inderjitp@cDSLindia.com

Eastern Region

Kolkata

Mr. Moloy Biswas
Horizon, 2nd Floor,
Opp. Exide Building,
57, Jawaharlal Nehru Road,
Near Rabindra Sedan Metro,
Kolkata - 700 071
Phone : 033 - 32974880
Email : moloyb@cDSLindia.com

Southern Region

Chennai

Mr. A. R. Vasudevan
BSE Investor Service Center
No:4, Vijaya Towers, III Floor,
Kodambakkam High Road,
Chennai - 600 034, Tamil Nadu
Mobile No.: (0)9881986000
Email : vasudevan@cDSLindia.com

Hyderabad

Mr. Shiva Prasad Venkhetty
Flat No.: 304, Right Wing,
Amrutha Ville, Opp. Yashoda
Hospital, Raj Bhawan Road,
Somasajguda,
Hyderabad - 600 082.
Phone : 040 - 30722582
Mobile No.: (0)9347033350
Email : ahvap@cDSLindia.com

Kochi

Mr. Shibunath T.
BSE Investor Service Centre,
4th Floor, M.E.S,
Dr. P.K. Abdul Gaffoor
Memorial Culture Complex,
Judges Avenue, Kalkoor,
Kochi - 682017 Kerala
Mobile No.: (0)9695449539
Email : shibunath@cDSLindia.com

Bengaluru

Mr. C. S. Harisha
No. 34 & 36, Annapurna Complex,
South End Road, Basavanagudi,
Bengalore - 560 004
Mobile No.: (0)9902103263
Email : csharisha@cDSLindia.com

If undelivered kindly return to :



Central Depository Services (India) Limited

CDSL is ISO 27001 Certified

16th Floor, Phiroze Jeejeebhoy Towers, Dalal Street, Mumbai - 400 001

Tel: 022-2272 3333 Fax: 022-2272 3199 www.cdslindia.com

Printed & Published by Mr. Sunil Alvaras, Vice President - Business Development on behalf of Central Depository Services (India) Limited and Printed at M/s. Hari Om Enterprises, 65-A/2, Shah & Nahar Industrial Estate, Dhanraj Mill Compound, Lower Parel, Mumbai - 400 013 and Published from Central Depository Services (India) Limited, 17th floor, Phiroze Jeejeebhoy Towers, Dalal Street, Mumbai - 400 001.

Editor : Mr. Sunil Alvaras